

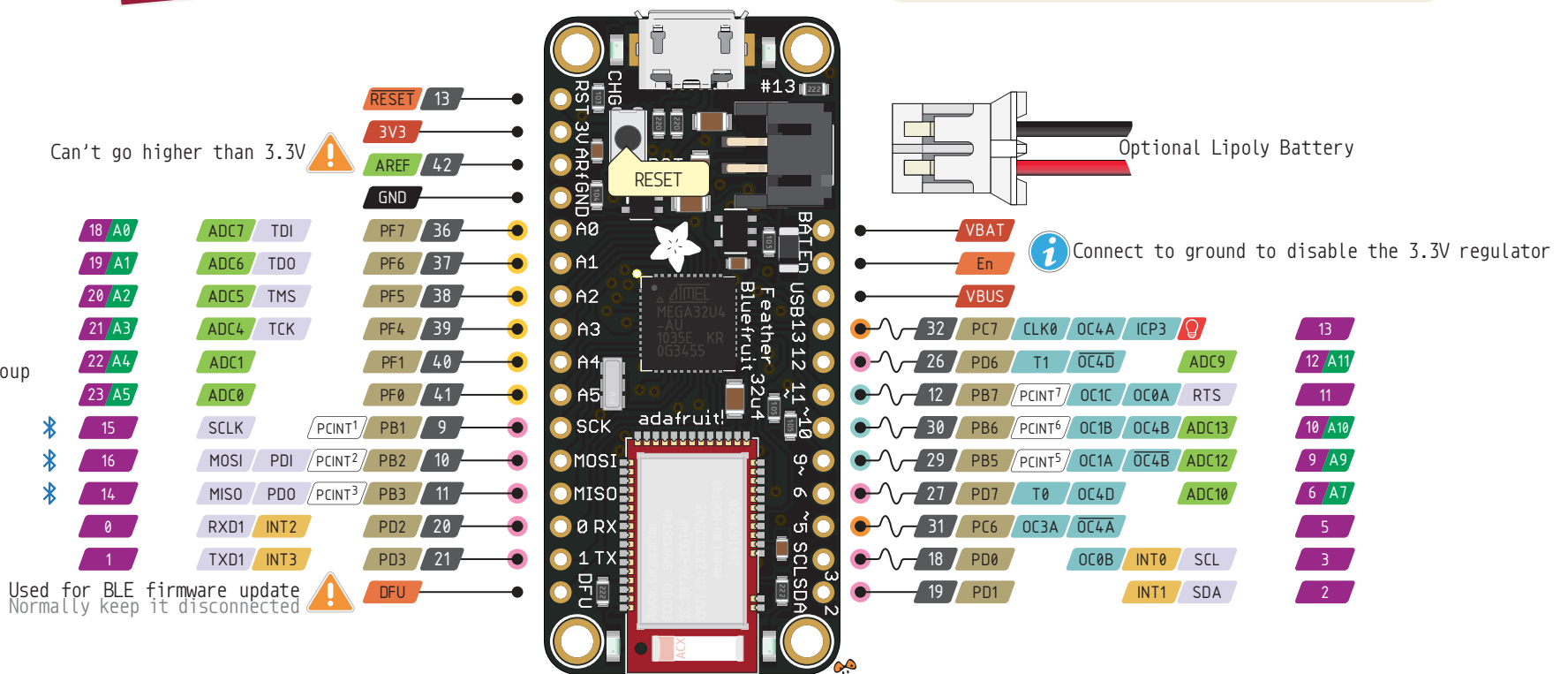
feather

32u4 Bluefruit

PINOUT

- Power
- GND
- Physical PIN
- Port PIN
- Analog PIN
- Serial PIN
- PIN Function
- Interrupt PIN
- Control PIN

- PWM Pin
- Port power group



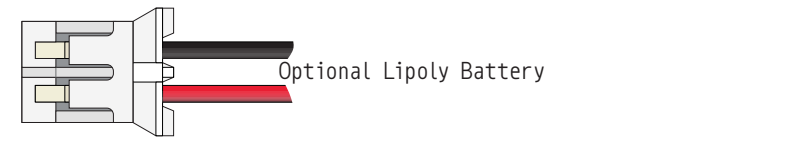
Can't go higher than 3.3V

Used for BLE firmware update
Normally keep it disconnected

BLE Module control

25 PD4 ICP1	ADC8	4 RST
1 PE6 INT6	AIN0	7 IRQ
28 PB4 PCINT4	ADC11	8 CS

Used by the BLE radio module too!



Connect to ground to disable the 3.3V regulator

- The total current of each port power group **should not exceed** 100mA
- Absolute** MAX per pin 20mA, 10mA recommended
- Absolute** MAX 200mA for the entire package

- VBUS** Connected to 5V USB Port **Absolute** MAX 500mA
- VBAT** It's the positive voltage from to JST Batt jack
- 3V3** 3V3 output from regulator **Absolute** MAX 400mA



<https://www.adafruit.com/product/2829>

